



# SALINE FC TRAVEL SOCCER INFORMATION FOR 2026/27

This presentation outlines the transition from birth-year to school-year cutoff registration beginning with the 2026–27 season, while also providing important information on upcoming ID sessions and travel tryouts. In addition, we'll answer some of the most common questions families have when considering the move from recreational to travel soccer and highlight the opportunities and benefits available through Saline FC travel soccer.

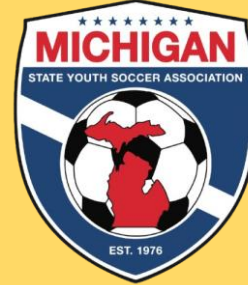




# WHY IS US YOUTH SOCCER REVERTING BACK TO A SCHOOL-YEAR CUTOFF?

1. Better Alignment With School & Social Development.
2. Reduced Disruption During Key School Transition Years.
3. Clearer Pathway Into High School Soccer.

4. Improved Retention and Participation.
5. Consistency Across Major Governing Bodies.
6. Supports Long-Term Player Development.



# AGE GROUP CHART

STARTING **FALL** OF 2026

AGE GROUP	BIRTHDATE
U18	August 1, 2008 – July 31, 2009
U17	August 1, 2009 – July 31, 2010
U16	August 1, 2010 – July 31, 2011
U15	August 1, 2011 – July 31, 2012
U14	August 1, 2012 – July 31, 2013
U13	August 1, 2013 – July 31, 2014

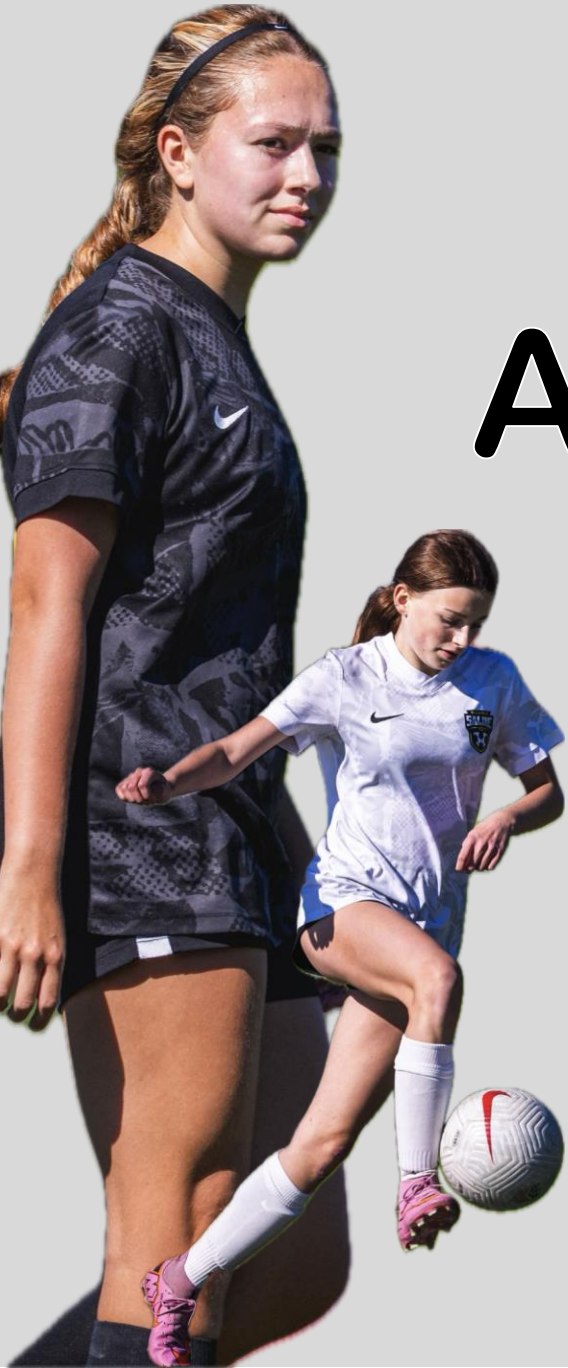




# AGE GROUP CHART

STARTING **FALL** OF 2026

AGE GROUP	BIRTHDATE
U12	August 1, 2014 – July 31, 2015
U11	August 1, 2015 – July 31, 2016
U10	August 1, 2016 – July 31, 2017
U9	August 1, 2017 – July 31, 2018
U8	August 1, 2018 – July 31, 2019
U7	August 1, 2019 – July 31, 2020





# FREQUENTLY ASKED QUESTIONS





# WHAT IS THE DIFFERENCE BETWEEN REC AND TRAVEL SOCCER?

Travel soccer offers a more structured and development-focused environment than recreational soccer. While rec soccer is a fantastic introduction to the game and emphasizes participation and local play, travel soccer provides players with consistent training, licensed coaching, and the opportunity to train and compete alongside teammates who share a similar passion and commitment to improving. At Saline FC, the goal is not to take the fun out of the game—it is to create an environment where players are challenged, supported, and excited to grow both on and off the field.



# IS MY CHILD “GOOD ENOUGH” FOR TRAVEL SOCCER?

This is one of the most common questions we receive, and the simple answer is: travel soccer is about development, not perfection. Many families assume travel is only for elite or highly experienced players, but at Saline FC we are looking for players who enjoy the game, are willing to learn, and are excited to be part of a team environment. Our ID sessions and tryouts are designed to help players explore the next level in a positive setting while allowing families and coaches to determine whether travel is the right fit.



# WHAT IS THE TIME COMMITMENT?

**Travel soccer requires more commitment than rec soccer, but it is often more manageable than families initially expect. Travel teams train twice per week and play games on weekends during the fall, winter and spring seasons. At the younger age groups, schedules are intentionally balanced to support player development while still allowing families flexibility. We encourage families to ask questions and understand the expectations for their specific age group so they can make an informed decision.**



# WHAT ARE THE COSTS & WHAT DO THEY COVER?

**We understand that cost is an important consideration for families. Travel soccer fees typically cover professional coaching, league registration, tournament fees, referee fees, field usage, indoor facilities, club operations, and player development programming. At Saline FC, we work hard to provide strong value for families by investing directly into coaching, education, facilities, and creating a quality soccer experience for our players.**



## 2026-2027 Travel Fees & Program Details

Age Group	U8	U9-U10	U11-U12	U11-U12	U13-U14
Format	4v4	7v7	9v9	9v9	11v11
League	WSSL	WSSL	WSSL	DA	WSSL
<b>Birthdate Range</b>	<b>7/31/2019-8/1/2018</b>	<b>7/31/2018-8/1/2016</b>	<b>7/31/2016-8/1/2014</b>	<b>7/31/2016-8/1/2014</b>	<b>7/31/2014-8/1/2012</b>
<b>Club Fees</b>					
League-, Registration-, and Field Fees	included	included	included	included	included
Club Operational Costs	included	included	included	included	included
Coaching Fees	included	included	included	included	included
Training Fees (2x per week) Spring/Fall	included	included	included	included	included
Team Camp (August) Kick-off	included	included	included	included	included
Goalkeeper Training Program	included	included	included	included	included
Referee Fees	included	included	included	included	included
Uniform (once every two years)	Additional	Additional	Additional	Additional	Additional
<b>Tournaments</b>					
Tournament #1 Registration Fee	included	included	included	included	included
Tournament #2 Registration Fee	included	included	included	included	included
State Cup/Jr. State Cup Registration Fee	N/A	N/A	DOC decision	included	DOC decision
Showcase Event	N/A	N/A	N/A	N/A	N/A
<b>Indoor Soccer (winter)</b>					
Training Nov/April (2x per week)	included	included	included	included	included
Facility Membership Fee (Approx \$25)	Additional	Additional	Additional	Additional	Additional
<b>Optional</b>					
Saline FC Summer Camps	Additional	Additional	Additional	Additional	Additional
Summer Champions Cup	Additional	Additional	Additional	Additional	Additional
<b>Cost</b>	<b>\$1,320</b>	<b>\$2,450</b>	<b>\$2,655</b>	<b>\$2,795</b>	<b>\$2,655</b>
<b>Payment Installments</b>					
Due at tryouts and before July 1st	\$440	\$817	\$885	\$932	\$885
2nd Payment (October 15th)	\$440	\$817	\$885	\$932	\$885
3rd payment (January 15th)	\$440	\$816	\$885	\$931	\$885
<b>Total</b>	<b>\$1,320</b>	<b>\$2,450</b>	<b>\$2,655</b>	<b>\$2,795</b>	<b>\$2,655</b>

Payments not received by any of the three due dates, will be assessed a \$25 late fee.

Paying in full before July 1st will reduce the total fee due by \$25.

\* Fees are based on the age group/birthdate of the player and league placement. For example, a player born in 8/13/2013 will be a U13 player in the 26-27 season.

If a player plays in an older division, they will pay the fees for that older division.

### League Information

WSSL: [Western Suburban Soccer League](#)

DA: [Directors Academy](#)

MSPSP: [Michigan State Premier Soccer Program](#)



## 2026-2027 Travel Fees & Program Details

Age Group	U13-U14	U15-U18	U15-U18	U15-U18	U15-U18
Format	11v11	11v11	11v11	11v11	11v11
League	MSPSP	WSSL	MSPSP	WSSL	MSPSP
<b>Birthdate Range</b>	<b>7/31/2014-8/1/2012</b>	<b>7/31/2012-8/1/2010</b>	<b>7/31/2012-8/1/2010</b>	<b>7/31/2012-8/1/2010</b>	<b>7/31/2012-8/1/2010</b>
<b>Club Fees</b>					
League-, Registration-, and Field Fees	included	included	included	included	included
Club Operational Costs	included	included	included	included	included
Coaching Fees	included	included	included	included	included
Training Fees (2x per week) Spring/Fall	included	Included (Spring Session)	Included (Spring Session)	Included (Fall Session)	Included (Fall Session)
Team Camp (August) Kick-off	included	included	included	included	included
Goalkeeper Training Program	included	Included (Spring Session)	Included (Spring Session)	Included (Fall Session)	Included (Fall Session)
Referee Fees	included	included	included	included	included
Uniform (once every two years)	Additional	Additional	Additional	Additional	Additional
<b>Tournaments</b>					
Tournament #1 Registration Fee	included	included	included	included	included
Tournament #2 Registration Fee	included	No	No	No	No
State Cup/Jr. State Cup Registration Fee	included	DOC decision	included	DOC decision	included
Showcase Event	N/A	N/A	included	N/A	included
<b>Indoor Soccer (winter)</b>					
Training Nov/April (2x per week)	included	included	included	included (until HS tryouts)	included (until HS tryouts)
Facility Membership Fee (Approx \$25)	Additional	Additional	Additional	Additional	Additional
<b>Optional</b>					
Saline FC Summer Camps	Additional	Additional	Additional	Additional	Additional
Summer Champions Cup	Additional	Additional	Additional	Additional	Additional
<b>Cost</b>	<b>\$2,795</b>	<b>\$1,850</b>	<b>\$1,850</b>	<b>\$1,950</b>	<b>\$1,950</b>
<b>Payment Installments</b>					
Due at tryouts and before July 1st	\$932	\$463	\$490	\$617	\$650
2nd Payment (October 15th)	\$932	\$463	\$490	\$617	\$650
3rd payment (January 15th)	\$931	\$462	\$485	\$616	\$650
4th payment (March 15th)	N/A	\$462	\$485	N/A	N/A
<b>Total</b>	<b>\$2,795</b>	<b>\$1,850</b>	<b>\$1,950</b>	<b>\$1,850</b>	<b>\$1,950</b>

Payments not received by any of the three due dates, will be assessed a \$25 late fee.

Paying in full before July 1st will reduce the total fee due by \$25.

\* Fees are based on the age group/birthdate of the player and league placement. For example, a player born in 8/13/2013 will be a U13 player in the 26-27 season.

If a player plays in an older division, they will pay the fees for that older division.

### League Information

WSSL: [Western Suburban Soccer League](#)

DA: [Directors Academy](#)

MSPSP: [Michigan State Premier Soccer Program](#)





# HOW DOES TRAVEL SOCCER HELP MY CHILD DEVELOP?

Travel soccer supports development in many ways beyond the game itself. Players improve technically and tactically through consistent training, but they also develop confidence, teamwork, communication, leadership, resilience, and problem-solving skills. Learning to work through challenges, compete positively, and support teammates are life lessons that extend far beyond the soccer field. At Saline FC, we believe youth sports should help shape well-rounded young people, not just better soccer players.



# WILL MY CHILD STILL HAVE FUN?

**Absolutely. Fun remains at the center of what we do. Players develop best when they enjoy coming to training, competing with teammates, and building friendships through the game.**

**While travel soccer introduces greater structure and challenge, Saline FC believes those experiences should be positive and motivating. Our coaches strive to create environments where players feel supported, challenged, and excited to improve.**



# HOW ARE TEAMS FORMED WITH THE NEW AGE AND GRADE CHANGES?

The recent shift toward grade-based team formation has been welcomed by many families because it helps players remain with classmates and peers throughout their soccer experience. This creates stronger social connections, smoother team continuity, and a more natural developmental pathway. Saline FC works to place players in environments that best support their development while helping families navigate these changes clearly and confidently.



# ARE TRAVEL GAMES ALL OVER THE STATE?

One of the biggest misconceptions about travel soccer is that families will spend every weekend driving across Michigan. In reality, particularly at the younger age groups, travel is very manageable. Saline FC participates in leagues that prioritize regional scheduling, meaning games are typically local with a maximum drive time of around 45 minutes for younger teams. This allows players to enjoy competitive soccer and team development while keeping travel demands reasonable for families.



# **CAN MY CHILD PLAY ANOTHER SPORT AND STILL PLAY TRAVEL SOCCER?**

**Absolutely—and we encourage it. Saline FC strongly supports multi-sport athletes and believes children benefit from participating in a variety of activities. Playing different sports helps develop coordination, athleticism, competitiveness, and mental freshness while reducing burnout and over-specialization at young ages. Travel soccer does not mean giving up other passions. Many of our players successfully balance soccer with basketball, softball, volleyball, swimming, and other sports. Our goal is to help children become well-rounded athletes who enjoy being active and continue developing a lifelong love of sport.**

# GIRLS ID AND TRYOUT SCHEDULE



## 2026/27 GIRLS ID SESSIONS



All sessions are held at Sandra Richardson Park, Milan.

U7 GIRLS	TUE 6/9 & THU 6/11	5.30PM-6.45PM
U8 GIRLS	TUE 6/9 & THU 6/11	5.30PM-6.45PM
U9 GIRLS	TUE 6/9 & THU 6/11	5.30PM-6.45PM
U10 GIRLS	TUE 6/9 & THU 6/11	5.30PM-6.45PM
U11 GIRLS	TUE 6/9 & THU 6/11	5.30PM-6.45PM
U12 GIRLS	TUE 6/9 & THU 6/11	5.30PM-6.45PM
U13 GIRLS	MON 6/8 & WED 6/10	6.45PM-8PM
U14 GIRLS	MON 6/8 & WED 6/10	6.45PM-8PM
U15 GIRLS	TUE 6/9 & THU 6/11	6.45PM-8PM
U16 GIRLS	TUE 6/9 & THU 6/11	6.45PM-8PM
U17 GIRLS	TUE 6/9 & THU 6/11	6.45PM-8PM
U18 GIRLS	TUE 6/9 & THU 6/11	6.45PM-8PM



saline\_fc



@salinesoccer



SalineFC

REGISTER FOR TRYOUTS AT [SALINESOCCER.ORG](https://salinesoccer.org)



## 2026/27 GIRLS TRYOUT SCHEDULE

# JUNE 13 & 14

All tryouts are held at Sandra Richardson Park, Milan.

U7 GIRLS	(AUG 1 2019 - JULY 31 2020)	10AM-11.30AM
U8 GIRLS	(AUG 1 2018 - JULY 31 2019)	10AM-11.30AM
U9 GIRLS	(AUG 1 2017 - JULY 31 2018)	8AM-9.30AM
U10 GIRLS	(AUG 1 2016 - JULY 31 2017)	8AM-9.30AM
U11 GIRLS	(AUG 1 2015 - JULY 31 2016)	8AM-9.30AM
U12 GIRLS	(AUG 1 2014 - JULY 31 2015)	8AM-9.30AM
U13 GIRLS	(AUG 1 2013 - JULY 31 2014)	8AM-9.30AM
U14 GIRLS	(AUG 1 2012 - JULY 31 2013)	8AM-9.30AM
U15 GIRLS	(AUG 1 2011 - JULY 31 2012)	10AM-11.30AM
U16 GIRLS	(AUG 1 2010 - JULY 31 2011)	10AM-11.30AM
U17 GIRLS	(AUG 1 2009 - JULY 31 2010)	10AM-11.30AM
U18 GIRLS	(AUG 1 2008 - JULY 31 2009)	10AM-11.30AM



saline\_fc



@salinesoccer



SalineFC

REGISTER FOR TRYOUTS AT [SALINESOCCER.ORG](https://salinesoccer.org)

# BOYS ID AND TRYOUT SCHEDULE



## 2026/27 BOYS ID SESSIONS



All sessions are held at Sandra Richardson Park, Milan.

U7 BOYS	MON 6/8 & WED 6/10	5.30PM-6.45PM
U8 BOYS	MON 6/8 & WED 6/10	5.30PM-6.45PM
U9 BOYS	TUE 6/9 & THU 6/11	5.30PM-6.45PM
U10 BOYS	MON 6/8 & WED 6/10	5.30PM-6.45PM
U11 BOYS	MON 6/8 & WED 6/10	6.45PM-8PM
U12 BOYS	MON 6/8 & WED 6/10	5.30PM-6.45PM
U13 BOYS	TUE 6/9 & THU 6/11	5.30PM-6.45PM
U14 BOYS	MON 6/8 & WED 6/10	6.45PM-8PM
U15 BOYS	TUE 6/9 & THU 6/11	6.45PM-8PM
U16 BOYS	TUE 6/9 & THU 6/11	6.45PM-8PM
U17 BOYS	TUE 6/9 & THU 6/11	6.45PM-8PM
U18 BOYS	TUE 6/9 & THU 6/11	6.45PM-8PM



saline\_fc



@salinesoccer



SalineFC

REGISTER FOR TRYOUTS AT [SALINESOCCER.ORG](https://salinesoccer.org)



## 2026/27 BOYS TRYOUT SCHEDULE

### JUNE 13 & 14

All tryouts are held at Sandra Richardson Park, Milan.

U7 BOYS	(AUG 1 2019 - JULY 31 2020)	2.30PM-4PM
U8 BOYS	(AUG 1 2018 - JULY 31 2019)	2.30PM-4PM
U9 BOYS	(AUG 1 2017 - JULY 31 2018)	2.30PM-4PM
U10 BOYS	(AUG 1 2016 - JULY 31 2017)	10AM-11.30AM
U11 BOYS	(AUG 1 2015 - JULY 31 2016)	12.30PM-2PM
U12 BOYS	(AUG 1 2014 - JULY 31 2015)	10AM-11.30AM
U13 BOYS	(AUG 1 2013 - JULY 31 2014)	2.30PM-4PM
U14 BOYS	(AUG 1 2012 - JULY 31 2013)	2.30PM-4PM
U15 BOYS	(AUG 1 2011 - JULY 31 2012)	12.30PM-2PM
U16 BOYS	(AUG 1 2010 - JULY 31 2011)	12.30PM-2PM
U17 BOYS	(AUG 1 2009 - JULY 31 2010)	12.30PM-2PM
U18 BOYS	(AUG 1 2008 - JULY 31 2009)	12.30PM-2PM



saline\_fc



@salinesoccer



SalineFC

REGISTER FOR TRYOUTS AT [SALINESOCCER.ORG](https://salinesoccer.org)



# HAVE QUESTIONS?

You can reach out to Coach Leigh either through email at [doc@salinesoccer.org](mailto:doc@salinesoccer.org) or his cell: 989-450-7532.